

THE **Voice**

The Autumn/Winter Edition

LIFE WITH LESS...



...FOOD WASTE

See inside for your 8 page food waste collection service pull-out.

Working for a *brighter future*  together

The VoiCE is brought to you and produced by the communications team at Cheshire East Council. An electronic version can be found on our website and made available in alternative formats on request.

If you would like to get in touch or have an enquiry about advertising, please email:
thevoice@cheshireeast.gov.uk

Recycling and The VoiCE

The VoiCE is produced using FSC accredited paper. The Forest Stewardship Council® (FSC) is an international organisation promoting responsible management of the earth's forests.

Please make every effort to recycle your edition after you have read it.

How much does it cost?

Each copy of the The VoiCE has cost 11p to design, print and distribute to every household in Cheshire East.

Contact Us

If you have a compliment, comment or complaint, call the Cheshire East Council information line on 0300 123 5500, visit: cheshireeast.gov.uk or you can find us on:

 @cheshireeast

 /cheshireeastcouncil

 /cheshireeast

 /cheshireeast

Hello and welcome to this latest edition of our residents' magazine The VoiCE.

I am delighted to welcome you to this autumn/winter edition of The VoiCE, our seasonal publication to keep you, our residents, informed about council services and developments.

Here, you will find an eight-page pull-out introducing you to our important food waste collection service which will come into effect in the New Year. We know that we must all play our part in reducing waste, minimising our use of plastic materials and make a real contribution to reducing carbon emissions.

A food waste collection service will help you and your council to achieve its carbon neutral target because rotting food waste disposed of through traditional methods, contributes to climate change through methane emissions.

So we do hope you will play your part and make proper use of the service, while also taking a few tips from us on how to reduce food waste altogether. All council staff are being urged to do their bit as well – both at home and at work.

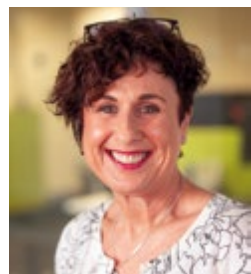
The council is now in its budget-setting period – that means preparing for how much we will be able to spend on services, our roads and infrastructure in the financial year 2020-2021. I am proud to say that this local authority is in good financial health, although like all councils, we continue to face serious challenges in relation to reducing budgets and increasing demand, particularly in adult and children's social care.

Naturally, we will do our utmost to minimise any increase in council tax but with the reduction in central government grant support to all local authorities, we have to become resourceful, resilient and innovative when it comes to balancing our budget. Have your say by taking part in our budget consultation. See more on Page 8.

I also want to assure you that this council is well prepared for our exit from the European Union. We have had regular contact with central government, local businesses and other agencies to prepare for the challenges we may be faced with. The council has its own task force to assess and address the potential issues resulting from our departure from the EU, proposed for early in the New Year.

Finally, we are entering the festive season so I do wish you a happy and peaceful Christmas and New Year and hope that you find this publication both helpful and informative.

Kath O'Dwyer, Acting Chief Executive



CONTENTS



4 IN BRIEF

The latest information on regenerating our borough, Pride in the Park

5 GET INVOLVED WITH YOUR COUNCIL

6 WHAT DO WE DO

The main services we provide and how to contact your local councillor

7 GET INVOLVED AND PLAY YOUR PART

Environmental Strategy and Local Transport Plan. Have your say on our green vision

8 SETTING A BALANCED BUDGET

Providing Value for Money

LIFE WITH LESS FOOD WASTE

Your 8 page pull-out on our new food waste collection service

9 SPECIAL EDUCATIONAL NEEDS & DISABILITY

Supporting our additional needs children and young people

10 LIVE WELL THIS WINTER

Dr Matt's guide to looking after yourself

11 HIGHWAYS AND FLOODING

Winter motoring safety advice with a focus on flooding

12 STRATEGIC INFRASTRUCTURE

Seven new highway and related infrastructure projects

12 FAMILY INFORMATION SERVICE

Free, confidential and impartial information and advice

14 PROPOSED GOVERNANCE ARRANGEMENTS

Moving to a new committee system

15 EVENTS IN CHESHIRE EAST

Wave-Field and Tatton Park at Christmas

16 CONTACT US

Access a range of services and report an issue

IN BRIEF



MACCLESFIELD TOWN CENTRE VISION

Following a public consultation earlier in the year, a new report maps out a vision for the 'town that celebrates its quirkiness'.

The framework sets out a vision, strategy and route map to support the vitality and viability of the town centre.

cheshireeast.gov.uk/maccregen



Regenerating our borough

Crewe's Market Hall is undergoing an exciting £3m programme of refurbishment – breathing new life into the Grade II-listed building and is planned to open next summer.

Further details for the Royal Arcade redevelopment are expected shortly. They include a new cinema, bus station, shops and multi-storey car park.

We're also developing proposals to secure two further funding opportunities for Crewe, through the government's Future High Street Fund and Stronger Towns fund. These are part of the government's commitment to build a more prosperous economy that works for everyone – with communities having a say on how the money is spent.

As part of our commitment we are now working with a range of partners to prioritise the key projects to take forward, investigating opportunities to diversify our town centres and attract more people to spend time there. This could include opportunities for environmental improvements, better connectivity, green technology and a wider range of homes in the heart of our towns.



LGBT+ 2020 EVENT CONFIRMED!

Pride in the Park will be returning to Cheshire East on **Saturday 20 June 2020** at Queens Park, Victoria Avenue, Crewe CW2 7SJ.

It follows a successful celebration of the LGBT+ community in Crewe in June and at Tatton Park in 2018.

Pride in the Park welcomes people from across Cheshire East and beyond, offering a whole host of family-friendly entertainment and activities, a vibrant parade and a dedicated marketplace of LGBT+ organisations to help offer advice and information for guests. prideinthepark.com

We're your council so get involved!

Are you registered to vote?

If you're not registered, you haven't got a voice at the next election.

Anyone who was registered to vote at the local council elections in May 2019, or who has since registered or amended their details, will not need to re-register now, providing that your name and registered address details have not changed. If in doubt, please take a moment to check that you're registered to vote.

Register now at gov.uk/register tovote

For the **General Election** the deadline to register to vote is **26 November 2019**.



Have your say – Digital Influence Panel

Do you want to help your community and help to improve services across Cheshire East? We are looking for residents to join our digital influence panel where you will be consulted on a range of council developments. It's easy to take part and you can do as little or as much as you like.

Apply today at

cheshireeast.gov.uk/consultations

Upcoming opportunity to express your views

There's a lot of activity around the corner for our borough's exciting future, with plans to ensure we are well connected, offering the right jobs and conditions for businesses to relocate in the area, and enhancing our environment, heritage and cultural offer.

All this planning brings a range of opportunities to voice your thoughts – through surveys, consultation and engagement events. In the new year, this will include topics like the HS2 Hub station, the Southern Road Link Bridge and proposals for a multi-storey car park.

We're recruiting!

Become a self employed foster carer for Cheshire East Council

Call **01925 444100**
or visit **foster4.co.uk**

F⁴OSTER



Contact your local councillor(s)

Cheshire East Council has 82 councillors in 52 wards, covering the entire borough of Cheshire East. To find out who your local councillor is, please go to cheshireeast.gov.uk and then click on **council and democracy** and then **find your local councillor**.

Cheshire East Council *Your Elected Councillors*



cheshireeast.gov.uk/council_and_democracy

Working for a *brighter future*: together



Your council – what we do for you

You might be surprised to know just how many services fall under the responsibility of a council. To try to make this easier to understand, we've compiled this guide to give you a steer on what we do.

Cheshire East Council provides a wide range of local services including:

- Bin collections, street cleansing and recycling
- Planning and building control
- Leisure and library facilities
- Maintenance of roads and bridges

- Parking services
- Maintenance of our countryside sites, parks and gardens
- Social care for the elderly, children and other vulnerable residents
- Cemeteries, crematoria and mortuary services
- Elections, registration of births, marriages and deaths
- Housing benefits and council tax
- Consumer protection

Whether we can help you with what you're looking for, try putting your specific subject into the search bar on the homepage of our website. cheshireeast.gov.uk

ENVIRONMENTAL STRATEGY – HAVE YOUR SAY ON OUR GREEN VISION!

The environmental strategy outlines steps we can take to improve our impact on the environment and climate change. This is a critical issue which we must tackle together and our approach to it can be developed further with your consultation responses.

Our draft plans show how we intend to respond to the global challenge of climate change and protect and enhance our local environment. It also sets out ambitious targets such as to become Carbon Neutral by 2025, reduce waste, improve air quality, address sustainable

transport, and promote policies to ensure that planning and building development is both sensitive and sustainable.

Our economic well-being depends upon a flourishing natural environment and our plans look at how we will manage the environment to restore nature, conserve heritage and enhance the beauty of our landscapes.

There is lots of information in the proposed strategy, grouped into six priority areas and the eight-week long consultation is open until **Sunday 1 December 2019**.

To comment on the plans, visit cheshireeast.gov.uk/consultations

Rural Action Plan

The council has developed a three-year rural action plan that seeks to highlight the opportunities and issues faced by rural communities and businesses. The plan explains the way the council considers rural areas when setting policy and strategic direction, at a local, regional and national level. Around half of Cheshire East's population (180,000 people) live in rural communities, including rural towns.

The rural area of Cheshire East is significant in terms of population, economic impact and its contribution to its 'quality of place' agenda – making Cheshire East a great place to live, work and do business.

The Market Towns Strategy is an extension of the draft economic strategy currently being consulted upon. It will set key objectives and achievable actions which will contribute towards the prosperity and long term wellbeing of each of our market towns.

Local Transport Plan

This plan includes a wide range of actions to improve travel choices and promote greater reliance on sustainable travel including walking, cycling, public transport and zero emission vehicles.

In a phased approach, the intention is to bring forward proposals related to transport improvements and management measures

based on detailed studies and the dynamics in each town across Cheshire East. Each of these town based delivery plans will be consulted on prior to any decisions, covering all aspects of local transport including parking.

The plan also looks at how transport will improve our economy, protect our environment and make Cheshire East an attractive place to be. Find out more at cheshireeast.gov.uk/localtransportplan

Providing Value for Money

Cheshire East Council has updated a key document online to demonstrate its strong financial position.

Cheshire East Council is the third largest council in the North West of England and is responsible for delivering more than 500 local public services across an area of over 1,100km² for over 378,000 residents.

Cheshire East is thriving, but there are challenges and we're changing how we do things to protect our front line services and the needs of our most vulnerable residents.

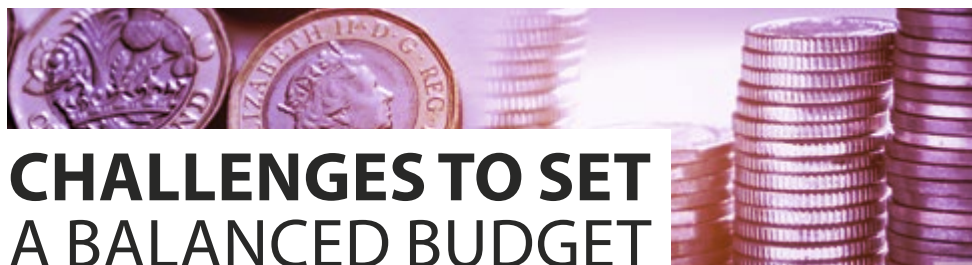
The complexity of customer demands and the size of the organisation make it very important to manage performance and control expenditure to ensure the best outcomes for residents and businesses.

Strong financial performance

The overall financial health, performance, resilience and value for money at Cheshire East Council is strong, and savings are consistently achieved through efficiency, removing duplication of effort, making reductions in management costs, and planned programmes of asset disposals. The approach continues to protect funding provided to front line services.

The council has robust billing and collection procedures for local taxation this is demonstrated by high, sustained collection rates from its relatively high domestic and non-domestic tax bases.

For more information go to:
cheshireeast.gov.uk/finance



CHALLENGES TO SET A BALANCED BUDGET

Like all councils, Cheshire East Council must balance its budget each year.

Funding for local government has reduced over the last few years and demand for our services – particularly for vulnerable children and adults – is increasing. This means we constantly have to review the services we provide and how we provide them, to get maximum value for money.

Cheshire East has a very strong housing and business base which allows over 95 per cent of the cost of council services (£281.2m for 2019/20) to be funded from local taxes (Council Tax and Business Rates).

This is positive in terms of local people funding local services, but it also has the downside of increases in costs having to be found from increasing those taxation levels. This is a difficult balance for councillors to strike – raising taxes or reviewing services – sometimes both just to balance the books.

We strive to get that balance right. We would like to know what you think about our priorities and spending, set out in our draft budget.

To get involved and have your say on our pre-budget consultation 2020 to 2024, go to:
cheshireeast.gov.uk/budget
Closing date 6 January 2020.

LIFE WITH LESS FOOD WASTE



Changes
affecting
residents with
a garden
waste bin

Your new
food waste
collection
service starts
6 January
2020



Please to support

**LOVE
FOOD**
hate waste

Working for a **brighter future** together

Cheshire East
Council

YOUR NEW **FOOD WASTE** COLLECTION SERVICE IN CHESHIRE EAST

From **6 January 2020** we will be introducing a new food waste collection service. We will be delivering a handy kitchen caddy and an initial supply of compostable liners to your home with instructions for use. It's clean and simple to use.

All you will need to do is line your kitchen caddy, if you choose to use one, with the compostable liners provided and put all of your food waste into the caddy. Once the caddy is full, tie the liner and simply place in your **GARDEN** waste bin along with your garden waste.

Wasting food costs a family on average

£70* per month

You bin this much food every month

40%

The new service starts Monday 6 January 2020

What are the benefits?



We have listened to you and your concerns. By recycling our food waste, we will reduce the amount of food going to waste and make a difference to our environment for the better.

Rotting food in waste produces methane, which contributes to climate change. It costs twice as much to dispose of food waste in a black bin, as it does to recycle food waste in your caddy - which helps to save the environment and helps you to save money too!

Biodegradable liners are optional in your caddy



SURPRISED AT HOW MUCH FOOD YOU WASTE?

Cheshire East families waste on average £70* a month on food waste.

Here are some simple tips and guidance on how to help you waste less and save more.

WHY DO WE WASTE SO MUCH FOOD?



We don't plan our shopping

We buy too much
(e.g. buy 1, get 1 free)

We don't understand dates
on food packaging

We don't measure portions,
so we cook too much

We don't store our
food correctly

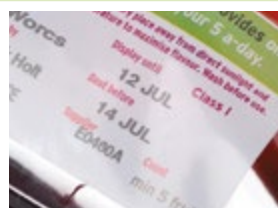
We don't use food in time



ARE YOU CONFUSED BY DATE LABELS ON FOOD?

BEST BEFORE DATE

This means that the food is at its best before this date, but is still safe to eat afterwards.



USE BY DATE

Food **MUST** be used by this date, even if it looks and smells fine. Food past this date is not safe.



DISPLAY UNTIL DATE

This is only for those who work in supermarkets. It tells them by which date the product must be removed from the shelf.



*Source WRAP (Waste and Resources Action Programme)

Look out for your food caddy which will be delivered from 6 January 2020. This will enable you to separate your food waste easily from the rest of your waste. You can start using it as soon as you receive it.

Caddies are anticipated to be delivered by 29 February, weather permitting. If you have not received your caddy by this date, please call 0300 123 5032.



You will be able to recycle **ALL YOUR FOOD waste including the following:**



Meat and fish - raw and cooked including bones



Fruit and vegetables - raw and cooked



Uneaten food from your plates and dishes



Bread, cakes and pastries



Rice, pasta and beans



All dairy products as well as eggs



Tea bags and coffee grounds



Leftover solid fats

You can also recycle cat and dog food, as well as hay, straw and wood shavings.

**The new service starts
Monday 6 January 2020**

**Make sure your garden waste bin is
out by 6:30am on your collection day**

**Biodegradable liners are optional
in your caddy**



Green Bin*

Now for garden and
food waste.

*This bin may be
brown in some areas.

**Please DO NOT put the following into your
food caddy or garden waste bin:**



**Packaging of
any sort**



**Plastic bags or
nappy bags**



**Cardboard or
paper**



**Foil or
food wrap**



Liquid



**Soil and
garden rubble**



Coffee filters



**Cat litter or
animal waste**

**REMEMBER! Packaging should NOT go in your caddy or garden bin. All
packaging must be removed and where recyclable, should be rinsed and
placed in your silver recycling bin.**

WHAT HAPPENS TO YOUR **FOOD WASTE?**



Hello!

I am your new food waste caddy 'Binyun'. I'm here to help you recycle your food waste. You'll see more of me in the new year with lots of handy tips and hints on food waste recycling.

Your food waste will be taken to a special processing plant in Crewe where it will be recycled into compost, which is used in horticulture and agriculture.



Food waste is collected from the kerbside.

The food and garden waste is then transferred to sealed tunnels which are temperature controlled to optimise the composting process.



After around a week in these tunnels, the partly composted material is moved to a 'maturation area' where it is left for eight weeks to break down further.

Following this period, the compost is ready to be transported off site for use in agriculture and horticulture.



HOME COMPOSTING

Composting at home is an inexpensive and natural process. You can compost your kitchen and garden waste into nutrient rich food for your garden, providing you with a free supply of compost that will keep your garden blooming year after year.

Did you know, composting at home for just one year can save global warming gases equivalent to all the CO₂ your kettle produces annually, or your washing machine produces in three months?

We have teamed up with 'Get Composting' to provide an exclusive offer of home composting bins and other great green products. Please visit getcomposting.com to find out more.



DOWNLOAD



THE NEW

WASTE WATCHERS APP

We have launched our new 'Waste Watchers' App to help residents get to grips with the new food waste collection as well as many other useful items such as:

- What you can/can't recycle
- FAQs
- Locating your nearest recycling centre
- Information on when your bin will be collected.



IT'S FREE AND EASY TO USE!

You can download the all new Waste Watchers App from the App Store or Google Play store now!



Thank you for joining us to reduce food waste in Cheshire East.

Small changes
make a huge
difference.

Happy recycling!



@CheshireEastCouncil



@CheshireEast

Biodegradable
liners are
optional in
your caddy

If you don't have a garden waste bin you will not be sent a caddy. Please continue to use your black bin for food waste but remember, you can still **Reduce, Reuse and Recycle** by making small changes to your food shop.



If you know of anyone who would like this leaflet in large print or alternative formats, please call us on **0300 123 5032**

For more information please visit: **cheshireeast.gov.uk/recycling**

This information is produced by Ansa Environmental Services Ltd – a company wholly owned by Cheshire East Council.

Working for a
brighter future
together

cheshireeast.gov.uk/recycling

Cheshire East
Council



Support for children and young people with additional needs

The Cheshire East Local Offer includes information and support for children and young people with special educational needs and disabilities from birth to age 25. To find out more visit: cheshireeast.gov.uk/localoffer

The Cheshire East Parent Carer Forum can also signpost parents to advice and information, to help them through their journey as carers of a disabled child or young person. Visit cepcf.org

Apply for your primary school place today

If you are a parent or carer of a child born between 1 September 2015 and 31 August 2016, and live in Cheshire East, your child is due to start primary school in September 2020.

Did you know that Cheshire East has 124 primary schools? Apply now, it's quick and easy at cheshireeast.gov.uk/schooladmissions or call 0300 123 5012.

Deadline for applications is 15 January 2020.

Grow your family with us...

Find out more:
adoptioncounts.org.uk

**adoption
counts** 



Salford City Council



DR MATT'S GUIDE TO LIVING WELL THIS WINTER

Staying on your feet

As the weather gets colder, all of us are at risk of a fall, both outside and at home. However, there are a few things you can do to keep active and live well.

Keep moving during winter to maintain your balance and ward off winter bugs.

Getting your eyes checked every year and your hearing every other year will help you keep your balance. It's also important to drink enough water to stay hydrated.



Staying hydrated

Taking on enough fluid is not just something to consider in the summer heat because good hydration will keep you living well throughout the winter. To make it easier:

- Keep a water bottle close at all times
- Sip a drink during meals
- Drink before and after physical activity
- Remember that alcohol is dehydrating and can make you more likely to fall
- Swap dry snacks for fruit and veg

Looking after yourself

Many winter bugs will get better over time and the symptoms can be easily managed. For example, many coughs and colds, sore throats and ear infections don't need to be treated by a GP or with antibiotics. These will mostly get better on their own so try to rest, stay hydrated and speak to a pharmacist for advice on how you can manage your health at home.

For more information on self-help and keeping well, go to:

cheshireeast.gov.uk/livewell/health-matters or healthwatchcheshireeast.org.uk/useful-links/wellbeing

Get vaccinated

The flu jab is the best way to protect yourself and others from flu. It's free if you:

- Are 65 and over
- Are pregnant
- Have a serious long-term medical condition
- Live in a long stay care or residential home
- Are a main carer for an elderly or disabled person
- A frontline health or social care worker

If you're entitled to an NHS flu jab but haven't had one already, then contact your GP or pharmacy today. If you don't qualify for a free jab, but want to protect yourself and others, you can still pay for this service at pharmacies.

Dr Matt Tyrer
(Acting) Director of Public Health



WINTER MOTORING SAFETY ADVICE

Winter roads

Winter can bring more than ice and snow – high winds, fog and heavy rain can all impact our roads and your journey.

Heavy rain can cause surface water flooding. Often a flood is likely to subside when the rain stops but if you see any flooding that is causing a danger to road users –please report it to us as the road may need to be closed for safety reasons.

For advice and guidance on flooding, including how to prepare visit thefloodhub.co.uk

Help us to keep our roads safe, report issues online

We're responsible for 92,000 gullies in Cheshire East which are part of an ongoing maintenance plan.

When you report a blocked gully, we visit and assess the site. Any blockages that affect

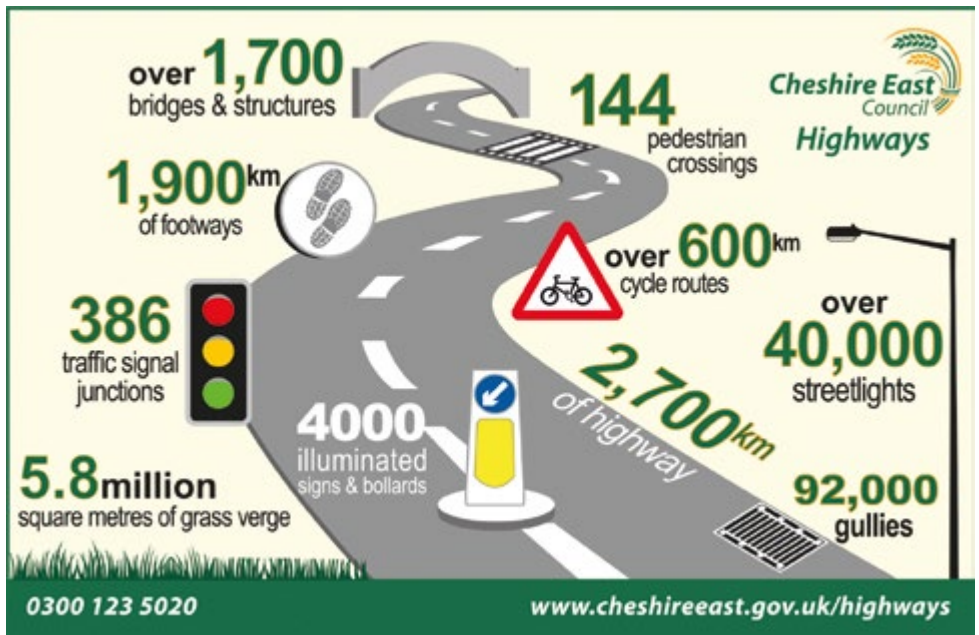
property or present a danger to road users are cleared as a priority.

Some drainage issues can be complex and require us to work with other organisations.

Most gullies drain into sewers which are maintained by United Utilities. In more rural areas, rainwater may drain into watercourses, sewers or naturally soak into the ground. Maintenance of drains and gullies on private land is the responsibility of the landowner.

To report a blocked gully, flood or highways issue visit cheshireeast.gov.uk/highways or call 0300 123 5020.

The highway network is the council's biggest asset, valued at nearly £6 billion. The council's approved budget proposals will see a further £270 million invested in Cheshire East's highway network over the next three years, which includes new infrastructure, improvements to existing infrastructure and maintenance.





MAJOR PROJECTS

We're delivering an ambitious £315m programme of highway infrastructure projects across the borough in Poynton, Congleton, Crewe and Middlewich.

Our local plan sets out seven new highway and related infrastructure projects to be completed before 2030. Each is designed to free up capacity, ease congestion and paves the way for unprecedented growth in time for the proposed opening of the planned HS2 Hub in Crewe.

The schemes are mainly funded by government following a series of successful bids, plus contributions from developers and the council.

The seven major projects in the programme are:

- £7.5m Crewe Green Roundabout (completed);
- £10.5m Crewe Sydney Road Bridge (completed);
- £90m Congleton Link Road (on site);
- £57m scheme to dual the A500 from junction 16 of the M6;
- £50m Poynton Relief Road;
- £58m Middlewich Eastern Bypass;
- £41m The North West Crewe Package.

We have also secured funding – to add to our own investment – for a £3.5m improvement scheme in Macclesfield at a congestion hotspot.

To find out more details about these schemes visit cheshireeast.gov.uk and search 'major projects'.



Cheshire East Family Information Service is a free, impartial information and advice service for families with children aged 0-25.

The service provides early help, support for families with childcare related enquiries and also support for children and young people with special educational needs and disabilities.

We also promote many family friendly activities and events in your area.

Find out more at cheshireeast.gov.uk/fis, follow us on Facebook or Twitter or call 0300 123 5033.

WE WANT EVERYONE IN CHESHIRE EAST TO LIVE WELL



Launched two years ago, Live Well is an invaluable online resource giving you greater choice and control to support yourself and your family.

Live Well provides useful information and advice on a range of subjects, plus an easy-to-use directory of more than 3,000 services and activities in local areas.

So whether you want to know more about groups and clubs, or need advice about health matters, money management, care and support for adults or children's services, Live Well Cheshire East can help you.

cheshireeast.gov.uk/livewell



SO MUCH MORE THAN READING...

We added nearly 50,000 new titles to our library offer in 2018/19 but that's just the start. Here's what else you could be a part of at one of our 16 Cheshire East libraries:

- Rhymetime and baby bounce sessions
- Meet friends and neighbours at Tea and Story groups
- Learn IT skills and bring your own device for help
- Coding clubs, Lego clubs and other science and technology activities
- Reading groups for all ages
- Language and conversation groups
- Access to research and local studies materials

E-magazines is a relatively new library service offer, which could save you hundreds of pounds each year. You can access popular titles and download them to your own device to read at your leisure. Best of all, it's free with your library card!

Want to know more? Then visit:

cheshireeast.gov.uk/libraries or go along to your nearest library.

your **Library**

CHANGE TO GOVERNANCE ARRANGEMENTS

Cheshire East Council is considering changing its governance arrangements from the current Leader and Cabinet (executive) model to a new committee system of decision making.

On 22 May 2019, the Council agreed the following Notice of Motion:

'This Council is committed to implementing a change in decision-making governance arrangements, comprising the cessation of the current Leader and Cabinet model of governance, and the implementation of a full Committee model of governance; this to be developed during 2019/20 with a view to the new arrangements taking effect from the beginning of the 2020/21 Municipal Year, subject to a legally and constitutionally robust process, led by the Council's Constitution Committee, and agreed by Council.'



A move to a committee system would result in the abolition of the Leader and Cabinet model. Decisions previously taken by the Cabinet would be taken instead by politically proportionate service committees.

The Council has set up a Governance Working Group, to consider and make recommendations on the design of the new committee system, including the functions of the service committees and how the Council continues to discharge its statutory functions

The earliest date for such a change in governance to take effect, subject to a formal resolution by Council and public notice, is from the date of the Annual Council meeting on 13 May 2020, and would be in place for at least 5 years.

Open the door and start a conversation about domestic abuse

Are you worried about someone else's relationship?

A friend, family member, colleague or neighbour?

Unsure what to do and how you can help?

Are you worried about your relationship?

Is your partner controlling, manipulative, abusive or violent?

Does something feel not quite right?



Domestic abuse has no respect for age, sex or sexuality – often going unreported. Don't be afraid to speak out.

If you, or someone you know is in a relationship that doesn't feel quite right... speak to someone about it.

Visit openthedoorcheshire.org.uk or call 0300 123 5101.

In an emergency always call **999**.

Stunning artwork set to light up

A hugely-popular travelling light and sound installation is set to wow crowds in our borough.

Wave-Field, a world-famous interactive art installation in the form of eight giant illuminated seesaws, is embarking on a tour of the north of England. Crewe will play host to this spectacle in Lyceum Square, from Thursday 21 November until Sunday 1 December.

As visitors interact with the artwork, it emits a unique pattern of light and sound to create a playful and unforgettable experience. It's free and will be open on weekdays from 3-8pm and weekends from 11am-8pm.

The installation will support the new Crewe cultural strategy, which identifies goals to complement the regeneration of Crewe through culture and heritage, and aims to create an environment where inspiration, innovation and creativity lead the economic growth of the area.



Wave-Field supports the strategy's aim of creating a confident and distinctive cultural offer in Crewe, as well as a strong creative and digital sector. Wave-Field's tour to Crewe will coincide with Lumen, Crewe's Night of Lights, organised by Crewe Town Council.

After its phenomenally successful launch last year, Lumen returns to Crewe on 29 November and running until 27 December. Lumen includes striking contemporary light installations, building projections and live performances. Wave-Field will be a key attraction at Lumen.

An enchanted Christmas at

TATTTON PARK

Take a fairytale dressed Mansion and make a wish with Father Christmas at the Farm... sprinkle with some magical family sing-a-longs and make it a Festive Friday with Mother Christmas and her crafty elves!

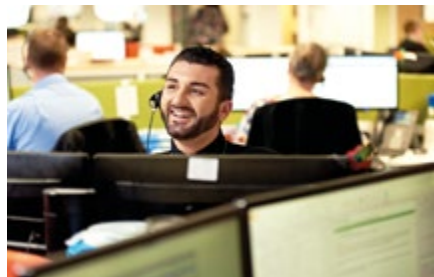
Plan your magical Christmas adventures with us tatttonpark.org.uk/christmas



24-HOUR ACCESS TO YOUR COUNCIL

cheshireeast.gov.uk

More of what we do and what you can do, is online on our website. You can access a range of services 24-hours a day, as well as make a payment, view planning applications, contact specific services and report issues such as fly-tipping and potholes to us.



cheshireeast.gov.uk/livewell

You'll find an easy-to-use directory of more than 3,000 services and activities in your area, plus useful information and advice on a range of subjects – giving you greater choice and control in finding care and support for you and your family.

cheshireeast.gov.uk/counciltax

Find out more about council tax and manage your council tax online. You can also contact our council tax team by filling in the online enquiry form.

Visit one of our customer service centres:

Visit cheshireeast.gov.uk/contact to check for locations and opening times.

Contact us by phone or post if you're not able to access our website or are unsure which service to contact.

Call the Cheshire East Information Line on:

0300 123 5500

Or write to:

Cheshire East Council,
c/o Municipal Buildings,
Earle Street,
Crewe CW1 2BJ

For emergencies out of hours – such as concerns for the welfare of an adult or child – call our emergency control centre on:

0300 123 5025

Find us on:

 @cheshireeast

 /cheshireeast

 /cheshireeastcouncil

 /cheshireeast